

# Simsbury Land Trust 2020 Annual Report



FACES BEHIND THE PLACES



## 2019-2020 BOARD OF TRUSTEES

Margery Winters, *President*  
 Karen Brand, *Vice President*  
 Danielle D'Ermo, *Secretary*  
 Bob Ellis, *Treasurer*

Ted Almy  
 Tom Crawford  
 T.J. Donohue  
 Fred Feibel  
 Katie French  
 Paul Henault  
 Chuck Howard  
 Jerry Jarrett  
 Diana Moody  
 Katie Piccirillo  
 Sally Rieger  
 Elliot Schulman  
 Brenda Sullivan  
 Camilla Thompson  
 Susan Van Kleef

### ADVISORY BOARD

Bob Bingham  
 Bill Cox  
 Candace Fitzpatrick  
 Bill Howard  
 Mike Long



### STAFF (left-right)

Patricia Hazelwood, *Director of Finance and Membership*  
 Amy Zeiner, *Executive Director*



*SLT board met via Zoom so our work could continue during COVID.*

## CONTENTS

- 1 Letter from the President
- 2 Faces Behind the Places
- 4 Who Does the Work for SLT Properties?
- 6 Thank You Don and Sally Rieger
- 7 Giving and the Pandemic
- 8 Financial Highlights
- 10 Membership Donations
- IBC SLT Properties Map

*Editor:* Amy Zeiner    *Design:* John Johnson Art Direction and Design

*Thanks to our photographers:* Danielle D'Ermo, Rocky Piccirillo, Robert Shea



## LETTER FROM THE PRESIDENT

*"Alone we can do so little; together we can do so much."*

~Helen Keller

What do you do when you can't go to work, attend school, eat out, go to the movies, travel or many of the other activities we once took for granted? You take a hike. And that is exactly what many in Simsbury have been doing. A walk outside in nature has been a wonderful relief from the confines of the house and the stress of uncertain times. Over the past eight months since the first COVID pandemic shutdowns, the Simsbury Land Trust trails have seen substantially increased use. SLT mailed out over 100 copies of our Simsbury Walkbook to local residents, and the Simsbury Land Trust received support from a near record number of members this year. We hear frequently from Simsbury residents how they have walked SLT trails they never knew existed and how much they have come to value our Town's abundant open space and trails.

None of these trails and properties that are helping us weather these challenging times would be available, however, without our many dedicated volunteers and stewards who help to keep the trails safe and passable. In August, when Isaias brought high winds and tree damage to many trails, Simsbury Land Trust stewards and other volunteers turned out within days to clean up the fallen branches and saw and remove the trunks blocking the paths. Volunteers have donated hundreds of hours patrolling the property perimeters, writing reports, removing invasive species, planting native shrubs and meadows, trail clearing, and repairing damage to existing trails. Others volunteers serve on the SLT board to help to ensure funding, provide education and recreational activities, as well as guidance to keep the organization functioning. Our volunteers, with our extraordinary staff, are the indomitable forces that keep the Simsbury Land Trust functioning even during these challenging times.

We dedicate this annual report to these volunteers — they are the faces behind our places. And with the increased success of the Simsbury Land Trust over the years, the need for such volunteers continues to grow. As you hike the trails and make your annual donation, we encourage you to consider becoming even more involved, if you can, to become one of the faces behind the places, to keep the Simsbury Land Trust the valued organization it is.

*Margery Winters*





## Faces Behind the Places

Open space, scenic vistas, farmland, open fields, ridgelines, bogs — a few of the things you think of when you hear Simsbury Land Trust. What you don't think about, but is vitally important, are the people behind the land. Board members, stewards, land donors, hikers, bird watchers, easement monitors and members — each plays an important role in making the Simsbury Land Trust what it is today. Every year in the annual report we celebrate the property and the 1,108 acres of land we are so fortunate to have in Simsbury. This year we celebrate the people who make it all possible.



### STEWARD — Christine Fleming

After almost 40 years of traipsing through and becoming familiar with Simsbury Land Trust properties, I wanted to become involved with the organization. I became a steward last year and have thoroughly enjoyed watching over The Bog. It's a unique piece of Simsbury and I look forward to caring for it for many seasons to come.



### TRUSTEE — Katie Piccirillo

When I first moved to Simsbury in 2014 I was both excited and impressed to discover the vast areas of protected land and extensive hiking trails that scatter about this lovely town. As I began to explore more and more, I also felt an obligation to give back. In an attempt to support the organization that stewards this land, I joined the Simsbury Land Trust. While it's easy to take the natural landscapes, outdoor spaces, and vistas we enjoy for granted, their long-term viability is hardly ever certain. I want Simsbury to have this beautiful protected land and these incredible trails forever; I also know it means we must work for it.

### EASEMENT MONITOR — Steve Osborn

It's great that Simsbury Land Trust has been able to help preserve some of our historic and iconic local farms. I'm fortunate to be able to see both the environmental benefit of our easement concept and to learn firsthand from the owner the joys and challenges of managing a successful farm.





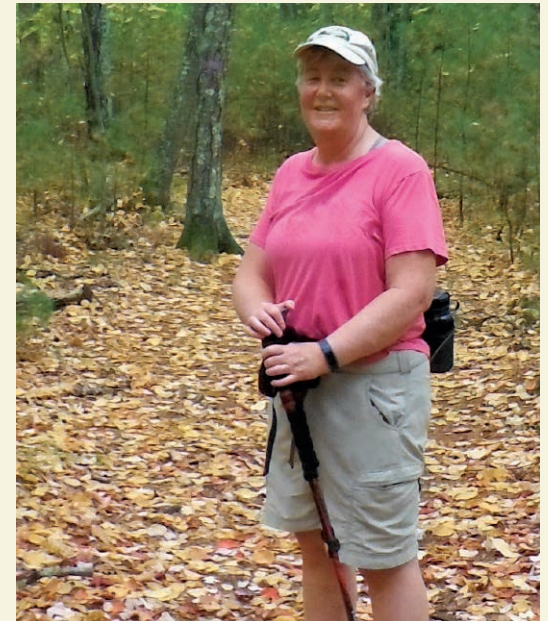


#### **LAND DONOR – Laird Mortimer**

25 years ago, when we purchased these 60 acres and a house deep in the Simsbury woods, we sought peacefulness. We found it. No other houses nearby and the Simsbury Land Trust around us. We enjoyed walking on our land and having a few picnics for our church. The Owen-Mortimer trail runs about an acre from our house. Nobody ever bothers us. We are happy that we bought this quiet virgin land and are still happy for the Simsbury Land Trust hikers to make good use of this small, but connecting plot.

#### **BIRD WATCHER – Zellene Sandler**

Though I live in Bloomfield, I support the SLT because I hike and bird the land trust properties. Tanager Hill is one of my favorites, not only for its beauty, but also for the variety of warblers and other birds that are seen here, including the uncommon Hooded Warbler. Thanks to the efforts in building the boardwalks and maintaining the trails, the property is easily hiked and enjoyed. Another little gem is the Glover property. Though small, one can see wrens and swallows nesting in the birdhouses, and learn about native plants from the informative signs. A great spot for a short walk, especially with kids.



#### **HIKER – Sarah Langdon**

I started hiking with the SLT Hiking Club several years ago. The leaders and other members of the group were very welcoming and knowledgeable and it wasn't long before I decided to join SLT. I love to hike the properties that SLT protects. Some days, I just want an easy walk through the woods and other days I want to challenge myself. Simsbury Land Trust has something for whatever mood I am in.



#### **DIRTY BOOTS KIDS CLUB – Future Faces**

While our activities have been paused in 2020, we would be remiss if we didn't acknowledge the future of the SLT. Young children participating in the Dirty Boots program and hiking with their families are the future of our organization. We welcome them and looking forward to seeing them grow up with the SLT.

#### **MEMBERS – All of you!**

Each of the 824 member families in 2020 played an important role in helping the Simsbury Land Trust protect 36 beautiful parcels of open space in Simsbury. We thank you for this continued and generous support!



# Who Does the Work for SLT Properties?

*Sally Rieger, SLT Trustee*

About a month ago, Simsbury Land Trust received a letter thanking the SLT for its wonderful and well-marked West Mountain Loop Trail. We are proud of our reputation for maintaining our trails while also managing our properties so they will continue to provide good habitat for native plants and wildlife as the climate changes.

Managing the Simsbury Land Trust's trails and properties requires lots of hands-on effort, comparable to yard work, but on a very large scale. Volunteers are the ones who do most of the work. Many are property stewards or monitors whose basic job is to keep an eye on a particular property or trail and to report back to the Stewardship Committee on any problems needing attention. Many go beyond this basic function, putting in lots of time and energy. Not all of the volunteers who work for the Simsbury Land Trust have assigned properties. Some are people who come to our workdays and take on a job then, and some are people who get in touch, looking for an ongoing project to do. We need them all!

Here are some of the hands-on jobs that our volunteers do:

- Clear downed trees from trails (there is more storm damage now than in earlier years).
- Cut back vegetation intruding on trails and paths.
- Cut overhanging branches over our mown paths. These are in the way when the mowing is done.
- Build and maintain our boardwalks, bridges and the large and small information kiosks.
- Build, install and repair bird nesting boxes (bears occasionally break into these).
- Spray the poison ivy around benches.
- Control invasive plants that degrade wildlife habitat.
- Post and replace various signs like the boundary signs that mark most of our borders.
- Complete Federal and State monitoring requirements for the farms on which we hold conservation easements (Rosedale Farm, Tulmeadow Farm and Woodlot, George Hall/Pharos Farm).

- Monitor and mark the borders of the properties the Simsbury Land Trust owns, checking for problems such as dumping of yard waste and unauthorized paths.

Volunteers also have some jobs that are not “on-the-ground” including:

- Mapping trails using GIS, creating the maps for our kiosks, and replacing them as needed.
- Designing our boardwalks, bridges and kiosks.
- Ordering our building materials and preparing them for installation by cutting lumber to size, drilling holes, etc.
- Attending conferences and workshops to stay informed about best practices in stewardship.
- Obtaining expert advice from the Connecticut Department of Energy and Environmental Protection, the North Central Conservation District and private professionals as needed.
- Working with Eversource on SLT-owned right of ways to ensure protection of the land's conservation values.





- Determining when to hire professional help for mowing, removal of dangerous trees, control of invasive plants, large trail improvement jobs, etc.
- Developing habitat enhancements like the pollinator-friendly area at Wagner Woods.

It has been exciting and a big accomplishment over the years for Simsbury Land Trust to have acquired the properties that are now the public's favorites among our varied holdings: 60 Westledge, the West Mountain Loop Trails, Wagner Woods, and Owen-Mortimer and Tanager Hill. We have been happy to provide the public with places for great outdoor activity, especially during the COVID-19 pandemic, when trail use has been very high. We could not offer our trails as a place for public recreation without our volunteers. We also depend on the public to support us through membership and donations to pay for equipment, supplies, publications, movies, speakers, office space and our office staff who provide financial and executive oversight.

## Thank you Volunteers!

SLT would like to thank the following volunteers who help us care for our properties.

Meg Addis	Tom Crawford	Dave Kozak	Don Rieger	Lori Stethers
Blake Anderson	Brian Czak	Dennis Lockwood	Sally Rieger	Camilla Thompson
Mary Baier	Danielle D'Ermo	Scott Lockwood	Paula Robinson	Joe Treacy
Scott Barnett	Arch Edgar	Jim Miller	Rick Robinson	Don Uhl
Karen Bellino	Lori Fernand	Diana Moody	Robin Scofield	Pat Uhl
Jerry Berube	Christine Fleming	Steve Osborn	Nancy Scott	Susan Van Kleef
Holly Beum	Jim Fleming	Bob Palmer	Bob Shea	Chip Ward
Olivia Birney	Marshall Greenberg	Lucas Pepe	Joan Skelly	Chris Warren
Teresa Bludeau	Bill Howard	Katie Piccirillo	Brett Sloan	Faith Weidner
Chris Bombara	Jerry Jarrett	Rocky Piccirillo	Marlene Snecinski	Mel Wolpert
Karen Brand	Patti Kellogg	Bruce Powell	Joe Springman	Biff Zoephel
Dick Clark	Michelle Knierim	Diane Powell	Rick Stanley	

If you volunteered last year and we somehow missed your name — thank you!





## Thank You Don and Sally Rieger

Walk any Simsbury Land Trust trail and you will see their work: a bridge, a new trail, a meadow of wildflowers. Or it might be something unseen, such as the absence of a fallen tree across the trail or a no longer present patch of invasive plants. Many of the things that enhance your hikes on SLT properties are the result of untold hours of research, planning, supervising, and just plain elbow grease on the part of two extraordinary members of the Simsbury Land Trust, Don and Sally Rieger.

When Sally Rieger joined the SLT Board of Trustees in 2005, Sally and her husband Don became involved in stewardship, taking over property management from then board member, Bill Howard. Don and Sally reorganized and expanded this committee to include a team of more than 25 property monitors. Over the years their stewardship responsibilities expanded as many new properties or easements were acquired by the SLT, including: Rosedale Farm; George Hall/Pharos Farm; the trail through the Tulmeadow Woodlot to Town Forest Road; the West Mountain Trails; and the Glover, Owen-Mortimer, Tanager Hill, Wagner Woods, and Michael Donlin properties. For each of those properties acquired during this period, Don and Sally took on the task of conducting environmental reviews and provided written reports for each potential new property.

It is difficult to properly tally all the other tasks that Don and Sally accomplished as head of the Stewardship Committee. Don created property and trail maps for

each property. They successfully applied for grants that helped fund conservation practices such as Japanese barberry control at Wagner Woods, buckthorn control at the Case property, and bird-friendly mowing practices at Wegner Field. Don and Sally worked with the town, the state and CT Forest & Parks on trail construction and management, and worked with the utility company to improve management practices of their right of ways over Simsbury Land Trust land. Don and Sally also fostered a relationship with Aquarion and, at their request, Aquarion worked to remove Japanese knotweed upstream of Hop Brook at 60 Westledge.

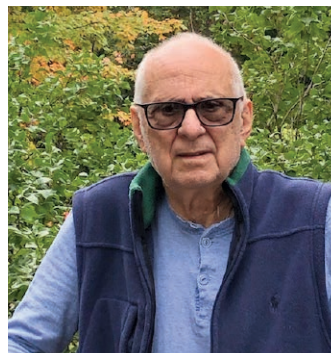
After fifteen years, Don and Sally are putting away their shovels, saws, and maps and are passing their Stewardship leadership roles to new volunteers. It is difficult to adequately express the gratitude that the Simsbury Land Trust has for their outstanding contribution of service over these many years. The Simsbury Land Trust is a stronger, better organization for their efforts. In the future it will take many more than two volunteers to accomplish all that Don and Sally have achieved.



---

## Other Board News

Time to say thank you and farewell to long-time board member **Elliot Schulman**. Elliot is resigning after serving on the SLT board for over 17 years. He served both as chair and member of the Governance Committee, as a member of the Finance Committee and various other roles in his time with the SLT. We will miss seeing him at our monthly meetings, and hope to see him and wife Natalie at our dinner in the spring. Thank you Elliot!



Also leaving the board this year are **Mary Baier**, **Brenda Sullivan** and **Jerry Jarrett**. We thank them all for their service to the SLT.

This past year we welcomed new board members **Tom Crawford**, who is serving as co-chair of the Stewardship Committee, **Danielle D'Ermo**, who is our new Secretary as well as SLT photographer, **Katie Piccirillo**, who leads hikes and helps as a steward and **Camilla Thompson**, who also serves as a property steward. Thanks to all of them for joining the board and sharing their time and talents.



# Giving and the Pandemic

Ted Almy, SLT Trustee

The COVID-19 pandemic has spurred a surge in visitation to Simsbury Land Trust properties as hundreds, perhaps thousands, of “cabin-fevered” residents and their families turned to our properties for safe and enjoyable outdoor recreational activity.

With this surge, of course, comes additional stress and wear and tear on our properties and the need for continued financial support to help the Simsbury Land Trust maintain trails and insure our properties are as safe and cared for as possible.

Donation of securities is a familiar, longstanding gifting method that can offer significant tax advantages to the donor. All gifts of stock receive a full-market value tax deduction and avoid all capital gains taxes. Stock gifts will be credited to the supporter based on the high/low average selling price on the day of transfer.

In 2018 Congress enacted a new law that allowed tax-free charitable cash donations of qualified IRA distributions. At that time, if you were 70½ or older, IRS rules required you to take required minimum distributions (RMDs) each year from your tax-deferred retirement accounts. This additional taxable income could push you into a higher tax bracket and reduce your eligibility for medical credits and other deductions. Under 2018 tax reform, the IRS made permanent the provision which allows you to satisfy your annual required minimum distribution (up to \$100,000 yearly) with a direct transfer of funds from your IRA to a qualified charity like the Simsbury Land Trust. As long as the qualified charitable distribution amount comes directly from the IRA to the charity, it can be excluded from your taxable income.

The pandemic triggered the 2020 CARES Act which among other things suspended the IRA Required Minimum Distribution requirement for the 2020 year and also pushed the RMD age from 70½ to 72. IRA holders, however, can still make income tax-free charitable distributions. For Simsbury Land Trust donors with charitable intent and a desire to support the SLT, there still may not be a simpler, more tax-efficient way to give than directly from your IRA.

For more information and assistance on donating to the Simsbury Land Trust and/or HFPG Richard A. Davis Endowment Fund, please contact us at 860-651-8773 or amyzeiner@aol.com.

*For Simsbury Land Trust donors with charitable intent and a desire to support the SLT, there still may not be a simpler, more tax-efficient way to give than directly from your IRA.*

# Hiking Etiquette

Sally Rieger, SLT Trustee

Simsbury Land Trust owns and maintains about 12 miles of paths and trails open to public use. We want you to get outside and use and enjoy our trails. If you are not already a Simsbury Land Trust member, we hope our trails and properties inspire you to join land conservation efforts that benefit wildlife and people.

When you're out on a trail, there are common rules of “trail etiquette” that make a happier and safer experience for all trail users. You'll find similar rules on many trails you hike, wherever your feet take you.



- 1. Stay on the trail.** Many trails abut neighbors' yards, so wandering off the trail may cause you to trespass. Also, our trails are routed to avoid environmentally sensitive areas like steep slopes and amphibian breeding areas. Sometimes it would be quicker for you to cut off a switchback, but please don't, because you will contribute to soil erosion.
- 2. Hikers going downhill should yield to hikers going uphill.**
- 3. If you pack it in, pack it out!** Don't dispose of trash or food waste on or along the trail. Sometimes animals pick up and eat inedible objects, and they are better off eating natural food. Other hikers don't want to see your masks, gloves, tissues, apple core or banana peels!
- 4. Do not approach or feed wild animals,** both for their and your wellbeing.
- 5. Hike quietly** and enjoy the natural sounds. Talk softly and don't talk on your cell phone except for emergencies, but you are welcome to use it as a camera.
- 6. Leave plants and other natural features** for others to enjoy.
- 7. If you are hiking with your dog,** follow any signs about leash requirements. Carry a plastic bag to clean up after your dog if necessary and carry it out with you. Even where permitted, it is best not to let your dog run loose. Dogs running in grassy meadows are a threat to grassland birds. Loose dogs are much more likely to cause dangerous encounters with predators like coyotes and bears. Also, many dogs like to chase and harass or catch wildlife.
- 8. If you need to relieve yourself when hiking,** find a spot well off the trail, not near water. Many hiker websites recommend finding a spot 200 feet from the trail.

Note — With the increase in use this year, it is more important than ever to follow these basic trail guidelines to make hiking more enjoyable for everyone.



*Allow nature's peace to  
flow into you as sunshine  
flows into the trees.*

~ John Muir

## Financial Highlights

### Statements of Activities

For the Years Ended June 30, 2020 and June 30, 2019

	2020			2019		
	WITHOUT DONOR RESTRICTIONS	WITH DONOR RESTRICTIONS	TOTAL	WITHOUT DONOR RESTRICTIONS	WITH DONOR RESTRICTIONS	TOTAL
<b>CHANGES IN UNRESTRICTED NET ASSETS</b>						
<b>Revenues:</b>						
Membership Contributions	\$120,835		\$120,835	\$111,284		\$111,284
Bequests				33,298		33,298
Contribution Income – Restricted *		\$13,197	13,197		\$30,640	30,640
Investment Income	22,470	32,021	54,491	25,074	-33,325	-8,251
<b>Other Revenue</b>	500		500	2,260		2,260
<b>Total Revenues</b>	143,805	45,218	189,023	171,916	-2,685	169,231
<b>Expenses:</b>						
Administrative	43,372		43,372	33,316		33,316
Salaries and Benefits	40,492		40,492	33,355		33,355
Membership	24,967		24,967	25,255		25,255
Stewardship	13,860		13,860	15,120		15,120
<b>Total Expenses</b>	122,691		122,691	107,046		107,046
<b>Revenues Over Expenses</b>	21,114	45,218	66,332	64,870	-2,685	62,185
<b>Other change in unrestricted assets:</b>						
Unrealized (loss)/gain on short term investments	5,651		5,651	9,728		9,728
Change in net assets	26,765	45,218	71,983	74,598	-2,685	71,913
Net assets, beginning of year	427,651	14,862,840	15,290,491	353,053	14,865,525	15,218,578
<b>Net assets, end of year</b>	<b>\$454,416</b>	<b>\$14,908,058</b>	<b>\$15,362,474</b>	<b>\$427,651</b>	<b>\$14,862,840</b>	<b>\$15,290,491</b>

\* Restricted Contribution Income is funds donated to the Richard A. Davis Endowment Fund held at the Hartford Foundation for Public Giving.



## Balance Sheet

Fiscal Years Ended June 30, 2020 and June 30, 2019

	June 30 2020	June 30 2019
<b>Assets</b>		
CURRENT ASSETS		
Cash	\$456,844	\$422,284
Prepaid Expenses		5,367
TOTAL CURRENT ASSETS	456,844	427,651
OTHER ASSETS		
Investments Held by Others	295,868	250,651
Land	14,612,189	14,612,189
TOTAL OTHER ASSETS	14,908,057	14,862,840
<b>Total Assets</b>	<b>\$15,364,901</b>	<b>\$15,290,491</b>
<b>Liabilities and Fund Balance</b>		
<b>Current Liabilities</b>		
Deferred Revenue - Annual Dinner	\$2,428	
<b>Total Current Liabilities</b>	<b>\$2,428</b>	
<b>Fund Balance</b>		
Unrestricted	\$ 454,416	\$427,651
Restricted – Richard A. Davis Endowment Fund	295,868	250,651
Temporarily Restricted	14,612,189	14,612,189
<b>Total Fund Balance</b>	<b>15,362,473</b>	<b>15,290,491</b>
<b>Total Liabilities and Fund Balance</b>	<b>\$15,364,901</b>	<b>\$15,290,491</b>



# Membership Donations

We want to thank the community for its generous support this past year.  
This was a near record year for numbers of members!  
None of the Simsbury Land Trust's accomplishments would have been possible without our membership and our many remarkable volunteers and donors.

## Star

Disney Worldwide Services, Inc.  
Professional Drywall Construction, Inc.  
UBS PaineWebber ♦♦  
United Technologies ♦♦♦  
The Werth Family Foundation ♦♦  
  
Almy Family ♦♦  
Michael and Lynn Callahan ♦♦  
Dom and Dorie Cinti  
Joyce Donahue ♦♦  
Michele Dante Dyson  
Frederick and Hannah Feibel ♦♦  
Ted and Kathy Fleming ♦♦  
Marc Gollob  
Sandra Gollob  
Bill and Becky Goss ♦  
Diana Haghighat and Gerardo Gutierrez ♦♦  
Wayne and Elinor Hoffman  
Dale and Janet Knecht ♦♦  
Nick Mason ♦♦  
John and Jacqui McCormick ♦♦  
Tom and Sandy McGee ♦♦  
Jane Porterfield and Gerald Pastor  
Judy and John Schaefer ♦♦ ♦  
Natalie and Elliot Schulman ♦♦♦  
Russell Shaw Jr. and Joyce Driscoll ♦  
Joseph and Mary Jane Springman ♦♦♦  
Paul and Camilla Thompson ♦  
Rick and Kristi Wartens ♦♦

## Steward

Aetna Foundation, Inc. ♦♦  
Guardian Life Insurance Company of America  
Mass Mutual Life Insurance Company ♦  
Voya Foundation ♦♦  
  
Peter and Pam Albertsen ♦  
Dave and Lori Carlson ♦  
Robert and Linda Ellis ♦♦  
Peter and Lisa Fagan ♦♦  
Rona Gollob ♦♦  
Joan and Chuck Howard ♦♦  
Sherry Irons ♦♦  
Alan and Becky Kreczko  
Mike Long ♦♦  
Loxton Family ♦♦  
Mary Mitchell ♦  
Jim and Diana Moody ♦♦  
Hunter and Julie Peacock  
Mr. and Mrs. J. Rodney Reck ♦♦  
Daneen Riaz  
Tom and Kim Richards ♦  
Clayton Stevenson  
Robert and Judith Sturgis Family Foundation ♦♦  
Chip Ward and Marjorie Aldrich ♦  
Tobey and Margery Winters ♦♦

- ♦ 5 Year Donor
- ♦♦ 10 Year Donor
- ♦♦♦ Endowment Fund Donor

## Sustainer

Clatter Valley Studio  
Hartford Fire Insurance Company  
Reid and Riege Foundation ♦  
Sky Investment Group LLC  
The Hartford Steam Boiler Inspection  
and Insurance Co.  
  
Amber and Tim Abbuhl  
Kevin and Britta Anderson  
Anonymous ♦♦  
Debra Barberi and Jay Barrett, Jr.  
Sara J. Batchelder ♦♦  
Jan Beatty and Michael Park ♦  
John and Lisa Bermel  
Nancy Boynton and Robert Lange ♦♦  
Tony and Tamara Braz ♦  
Nate and Judy Cantwell  
Deborah Carey ♦♦  
Bill and Karyn Cordner ♦♦

Danielle D'Ermo and Art Mullen  
T.J. and Terri Donohue  
Reinaldo Figueroa and Jennifer H. Johnson ♦  
Katie French ♦♦  
Craig and Lisa Hugel ♦♦  
Kevin Hutt  
Laurinda Jaffe ♦♦  
Barry and Jolie Kline ♦♦  
Ellen and Mark Lescher ♦♦  
Alan and Judy Lieberman  
Susan Masino and David Galt  
Ken and Sandy Mason  
Keith and Carol McLean-Shinaman  
Gary and Patricia Moeller ♦♦  
Richard and Nancy Murphy  
Gregory Nelson  
Dottie and Max O'Meara ♦  
Lynn and Laurence Pollack  
John and Liz Roper ♦  
Rebecca and Peter Rosenthal

*"Not only must we be good, but we must also  
be good for something."*

~Henry David Thoreau





Michael Ryan ♦  
Jonathan Scull  
Sexton Family  
Noubar and Meri Stone  
Brenda J. Sullivan, CPA ♦  
John and Liz Thayer ♦  
Wilson and Rebecca Vega  
Michael and Moira Wertheimer  
Wayne and Melinda Westbrook ♦♦  
Amy and Larry Zeiner ♦♦♦

### Sponsor

Avon Veterinary Clinic ♦  
Barings  
Gardeners of Simsbury  
Prudential Financial

Roger C. and Nancy S. Adams ♦♦  
Anonymous  
Mr. and Mrs. James Bagnall  
Christopher and Mary K. Baier ♦♦  
Robert and Debra Beckius ♦  
Marler and Christina Beebe  
Gerard Berube  
Robert and Carol Bingham ♦♦  
Marguerite Boslaugh and David Guadiana ♦♦  
Mark and Patty Bozeman ♦♦  
Richard Clark and Carolyn Brand ♦♦  
Karen Brand and Ed Cox ♦♦  
John Bruno and Artemis Tsagaris ♦  
Lucille and Bill Burke  
Deborah Calloway and Patrick Lee  
Peter and Patricia Carey  
Michael Cegan ♦♦  
Wayne Coste and Gail Adams  
Tom and Patty Crawford ♦♦ ♦  
Mark and Moira Dailey ♦  
Kelly and Joe Daly  
Arch and Pauline Edgar ♦  
Mr. and Mrs. William Estell ♦  
Tammy Fagan ♦♦  
John and Lillie Feierabend  
Elaine Ferreira  
Robin Finn  
Richard and Joan Fortier

Anthony and Susan Galici ♦  
Brian and Karen Gallagher ♦♦  
Anna Gertz  
Marion Gilmore ♦♦  
Ed and Sherri Goldberg  
Bill and Vivian Gombert ♦♦  
Mr. and Mrs. Robert B. Green ♦  
Sarah Greer and Brandon Barrett  
Dr. and Mrs. Michael R. Grey ♦  
Dagny and Harrison Griswold  
Brandon Gumula  
John and Elizabeth Gunn  
Haldeman Family ♦  
Janet and Stuart Hawkins  
Tricia and Josh Hazelwood ♦♦  
Jim and Lisa Heavner ♦♦  
Paul and Terry Henault ♦  
Ping and Sarah Hsieh ♦  
Mary Patricia Issavi  
John R. Johnson, Jr. ♦♦  
David and H.B. Kaplan  
Carolyn Keily  
Michele Knierim  
Paul Knierim and Greg Nickett ♦♦♦  
Fabiola Kulig  
Lorrie and Doug Lescarbeau ♦  
James and Lynn Lewis ♦♦  
Patti and Fred Lorenzen ♦♦  
Edward and Kelly Lyman ♦  
David and Deeg Mackay ♦  
Ed and Sandy Macri  
Andrew and Dorothy Mason  
Dale Matheson ♦  
Paul and Karen McKenna  
The McNamara Family  
Geoffrey Meissner  
Mitchell Family  
Eric Mortensen  
Deborah and Richard Muller, MD  
Paul Murphy ♦♦  
Matthew and Lisa Natcharian ♦  
The Oleasz Family  
Steve and Tina Osborn ♦♦  
Achilles and Mary Ann Pappano ♦♦  
Polly and Steve Parker ♦♦



Craig and Jill Perreault ♦  
Stephen Philbrick  
Rocco Piccirillo and Katherine Lauder  
Joanne and Roy Pomerantz ♦♦  
The Preskenis Family ♦♦  
Shannon and Craig Rodner ♦  
Randy and Joanne Romitelli ♦  
Molly Rutledge  
Paul Sapiro  
Matt Savarino  
Patricia Scanlon ♦♦  
Robin and Borden Schofield  
Mark and Ieke Scully ♦  
Michael Kern and Susan Shuffman  
Roger and Barbara Spear ♦  
Kevin and Olivia Stange  
Amy Stepka  
Robin and Chris Stine  
Marge Storrs ♦♦  
Richard Stratton and Sandra Francis  
Anupam and Varsha Tantri ♦♦  
Robert and Marjorie Taylor ♦♦  
Joe and Dianne Treacy ♦♦  
Don, Carol and Emily Tuller ♦  
The Verney Family ♦  
Ann and Stu Wallack ♦

Pat and Bill Walsh  
Marc and JoAnn Warren  
Sarah and John Waterman ♦♦  
Marilyn and Jon Webber ♦♦♦  
Fred and Amy Wergeles  
Mary and John Wright ♦  
Edward and Carol Wrobel

### Family

Fiduciary Investment Advisors, LLC  
Travelers Community Connections  
  
Kevin and Marsha Adams ♦♦  
Bonnie Aldrich  
Scott and Aviva Alibozek  
Phoebe and P.K. Allen  
Aloisi Family  
Glenn and Mary-Lyn Alonzo ♦  
Linda and Douglas Andersen  
Anonymous ♦♦  
Steven and Lisa Antonio  
Tyler and Emily Archer  
Andrew and Hannah Ardenski  
Ronni Attenello  
Lewis F. Banci and Frank G. Domanic ♦  
Maite Barainca





Michelle Baratta  
 Martha Barman  
 Nicholas Barnett  
 Scott and Kris Barnett ♦  
 Barrows Family  
 Joseph and Alice Barry ♦♦  
 Mike and Diane Barry  
 Steve and Robin Bartholomew ♦♦  
 Jennifer Batchelar  
 Tia Battiston  
 Lawrence Baxter  
 Shirley and Douglas Beach ♦  
 Karen Bellino ♦  
 Gary and Elizabeth Berman ♦  
 Jo-An Boehm ♦♦  
 Patricia and Mark Boudreau  
 Sandra and Robert Bourke ♦♦  
 Sue Brachwitz and Mark Silverman ♦♦

John and Lori Brandon  
 Braunlich Family  
 Tony and Ann Brockelman ♦  
 Christel and Jon Brown ♦  
 Holly Buckland  
 Deb and Fred Bull  
 Susan M. Bullock ♦♦  
 Gary and Loraine Burdick  
 John and Sara Burrows ♦  
 Steve and Susan Byer ♦  
 Katherine and Leo Cain  
 Nancy Grandin and Joseph Campolieta  
 Jean and Steven Canter  
 Sal and Caterina Carbone  
 Lou and Linda Carissimi ♦♦  
 Margie and Dick Carlson  
 Michael and Rita Carr ♦♦  
 Heather and Sean Carroll

Joe and Liz Cary  
 Susan and Kenneth Case  
 Catherine Ceneviva  
 Bob and Amy Charron  
 Steve and Laura Chenard  
 Angela and Jim Church ♦♦  
 Marianne Cirrito  
 Tom and Rosemary Clarke ♦♦  
 Roger and Sandy Coombes ♦♦  
 Dr. and Mrs. Todd Cooperman ♦♦  
 Mark and Patricia Coslett  
 Beth and Rick Costello  
 Greg and Lynn Crane ♦♦  
 Bill and Melanie Cranshaw ♦  
 Crespo/Emott Family  
 Patricia and Thomas Cummings  
 Paul and Karen Cummings  
 Robert and Deborah Cushman  
 Ronald and Lorraine Daigle ♦♦  
 John and Anne Danaher  
 Scott and Anne Daniels ♦♦  
 Christopher Delgross  
 Nancy and Craig Dennen ♦  
 DeTroy Family  
 Jane and Larry DiSciaccia ♦  
 Susan Downes  
 Bill and Pat Dryden  
 Mary and Donald Ducor  
 Loren Edge  
 David and Patricia Edwards  
 Bob and Laura Eilers  
 Mark and Dana Eisenberg  
 Anne Erickson  
 Patricia Estill ♦  
 Euting Family  
 Sam Fabian and Family ♦♦  
 Christopher and Heather Feinsinger  
 Christine and James Fleming ♦  
 Steve and Claudia Franklin ♦  
 Peggy Furey  
 Rosemary Fusco ♦♦  
 Elaine Gerry  
 Judith and Robert Gibbs ♦  
 Thomas and Deborah Glass  
 Susan and Jim Gleason

David and Irene Glissman ♦  
 Scott and Sharon Goetjen ♦  
 Goetz Family  
 Loel and Ruth Goldblatt ♦  
 Kevin Gough and Paula Jones ♦♦  
 Lisa and Bruce Gould  
 Deborah Grandin ♦♦  
 Ira and Judith Greene ♦♦  
 Robert Gresham  
 David and Mary Gridley  
 Griffin Family  
 The Groeschner Family  
 Janna and Jeff Gross ♦  
 Kayce and Jeff Gutsfeld  
 David and Sara Hadden  
 Anna Harris  
 Carol and Robert Harris  
 David and Sharmane Hartwell  
 John and Barbara Hartwell ♦  
 Abraham and Lori Hartz  
 Bob and Sue Hensley  
 Charles and Eileen Higham  
 Holly and Gert Hilhorst ♦  
 Robert and Laurie Hine  
 Hines-Shaw Family  
 Arthur and Rita House ♦♦







Leigh and Dave Hovey ♦♦  
 Joyce and Frank Howard  
 Judith and Barclay Howe  
 Elizabeth and Ryan Hucker  
 The Humphrey Family  
 The Hunter Family  
 The Idema Family  
 Ralph and Karen Jacob  
 Ken and Ruth Jacobson  
 Jeremiah N. Jarrett  
 Michele A. Jenks  
 Dean A. Johnson  
 Rick and Carol Jones ♦  
 William and Mary Beth Jordan ♦♦  
 Seth Joseph ♦♦  
 Frank and Catharine Joslyn ♦♦  
 Michael and Patti S. Juda  
 Carol and Robert Jugenheimer  
 Dan and Kathy Kay  
 John and Deann Keating ♦  
 Linda and Nat Kennedy  
 Edward and Joanne Kenney ♦  
 The Kim Family ♦♦  
 Kimball Family ♦  
 Gloria Knierim ♦♦

Peter and Gail Korten ♦♦  
 Ric and Dee Ann Krahl ♦♦  
 Walter C. and Elizabeth M. Kress ♦♦  
 Kwon Family  
 David and Kaarina Labella  
 Alan and Leslie Lahue  
 Langlais Family  
 Stephen, Heather, Jack and Will Latin  
 Lauren and Chris Lett  
 Paul and Kathy Lettieri ♦♦  
 Brendon and Kelly Lewis ♦♦  
 Sandy and Tom Lipscomb  
 Dransfield Family  
 Bob and Bonnie Lombardi ♦  
 Marc and Lori Lubetkin  
 Robert and Kathleen Luchs  
 The Lunding Family  
 Robert and Lois Lyle ♦  
 George and Doris MacDonald ♦  
 Gregory and Susan Maglieri ♦  
 Kathleen Mahieu  
 Becky and Kevin Mahoney ♦  
 Ellen and Charles Mandelberg ♦♦  
 Neil Manning  
 Greg and Catherine Marco ♦

James and Sherry Marsh  
 Mike and Lisa Marti ♦  
 Katie Martin and Chris Drew ♦  
 Martin-Beaulieu Family  
 Melissa and Brian Masthay  
 Diane and Geoff Mather ♦♦  
 Debra and Paul McAlenney  
 Charlie and Karin McCormick  
 McDonald Family ♦♦  
 Julia and Dennis McGoldrick  
 Hope McManus  
 Christa Menzel ♦♦  
 Bill and Rosemary Meskill  
 Kevin and Julie Meyer  
 Brittney Pierce Mihalich  
 Ann and Paul Mikkelsen  
 Bob and Jean Miles ♦  
 Brenda Miller and Pradeep Bajaj ♦  
 Mike and Jennifer Mooney  
 Jane Moos and Family ♦  
 Doug and Bobbi Morehouse  
 Jim and Carolyn Mullane  
 Holly and Shaun Murphy  
 Amy Musser  
 John and Joan Nagy ♦♦

David and Sarah Nanzig ♦  
 Diane and Donald Nash ♦♦  
 David and Jill Nelson ♦♦  
 Patrice Nelson ♦  
 Laurie Nilsen  
 Scott and Sara Novak  
 Nyberg Family  
 Anne O'Connell  
 Sally and Terrence O'Connor  
 Brian and Terri O'Donnell ♦  
 Jim and Jean O'Herron ♦♦  
 Rhoda and Louis Obermeier  
 Jan and Jeff Olsen ♦  
 Mark and Dianne Orenstein  
 Geoffrey Palmer and Giannina DeBernardis ♦♦  
 Ronald and Barbara Patterson  
 Sarah Pech  
 Pepper Family ♦  
 Jan and Allen Petersen ♦♦  
 Mr. and Mrs. Paul E. Petersen ♦  
 Jacqueline and Steven Petrella  
 Dr. Joseph Piecuch and Michele Potvin-Piecuch ♦♦  
 Lindsey and Deb Pinkham  
 Jonathan Pita  
 Jodi Polsgrove  
 Jim and Dian Pomeranz ♦  
 Julia Parker Post  
 Potter Family  
 Robert Poutasse  
 Anne-Marie Prabulos and Chris Morkan ♦♦  
 Donna Prohazka, M.D., M.S. ♦  
 Brian and Peg Ralphs  
 Vaughn and Charlotte Ramseur  
 Mary Randall and Larry Neureither  
 Gregory Ray  
 Daniel Reilert and Debra Argosy  
 David and Louise Reilly  
 Susan and Dan Rich  
 Robert Richardson  
 Scot Riley and Tracy Labonte  
 Rustin Rodewald  
 Michael and Joan Rogers  
 The Rose Family  
 Sara and Sam Roundy ♦♦  
 The Rowe Family



Jennifer and Steve Rowley ♦  
 Viviann and Jon Rubin  
 Joanne and David Russell  
 David R. and Gail K. Ryan ♦♦  
 Margy and Paul Salvatore  
 Michael and Susan Sames  
 Bridget Scarlato  
 Carol and Dan Schaper  
 Michael and Susan Schenker ♦♦  
 Jack and Debra Schmetterling ♦  
 Drs. Liz and Chris Schuck ♦  
 John and Peggy Schuyler ♦  
 Ruth Schwarz  
 Nancy Scott and Dennis Lockwood ♦  
 Ron and Jo Ann Segalla ♦  
 The Sennott Family  
 Lauren and David Shafer ♦

Elizabeth and Web Shaffer ♦  
 Richard and Karen Sickinger  
 Slabinski Family  
 Brett Sloan and Bob Palmer ♦  
 Cynthia Smith  
 George and Nadine Smith  
 Katherine and Paul Smith ♦♦  
 Marguerite Smith  
 Leslie and Jim Somers ♦  
 Soskin Family  
 William Spatcher  
 Bill and Julie Stachowiak and Family  
 Richard Stanley and Ginny Garratt ♦♦  
 Robert Stelzer  
 Charlie and Linda Stephenson ♦♦  
 Lori Stethers and Marshall Greenberg ♦  
 The Stimpson Family ♦

Pat and Dianne Sullivan  
 Wiley and Alison Swain ♦  
 John and Jean Sziklas ♦♦  
 Barbara Taylor and Brian Czak  
 Lori and Paul Texiera  
 Joshua Thayer  
 Richard and Elizabeth Thomas ♦  
 Josef and Kumi Treggor  
 Mr. and Mrs. Donald E. Uhl ♦♦  
 Scott Berry and Nancy Urner-Berry  
 Trisha and Carl Van Doren  
 Jim and Kitty Vangunten ♦  
 Joe and Angelica Venishnick ♦♦  
 Aarti and Jason von Bartheld  
 Mr. and Mrs. T. Christian Vouglas  
 Nancy and David Wadhams  
 Winthrop and Marlene Wadsworth ♦  
 Lyn and George Walker ♦♦  
 Andrew Walter and Laura Schuyler ♦  
 Qicheng Wang  
 Mr. and Mrs. Timothy C. Ward  
 James E. Miller and Faith Ann Weidner, MD ♦♦  
 Kevin and Wendy Werle  
 Polayes/Weymouth Family  
 Chris, Katie and Samantha White  
 Paul and Marjorie Wickersham  
 Dick and Carla Wilde ♦♦  
 Kristen and Larry Wilder  
 Pat and John Wiles ♦♦  
 Maggie and Sherman Willard  
 Gloria Williams ♦  
 Doug and Karen Willis  
 Gerald Winter ♦  
 Tim Wolf and Linda Pagani ♦♦  
 Barbara and Chuck Wolfe ♦  
 Mel Wolpert and Joan Skelley  
 Bob and Jane Wyld ♦♦  
 Tom and Karen Yanik ♦♦  
 Zablotzky Family  
 Tony and Eileen Zaldonis ♦♦  
 Zappone Family  
 Lou and Janet Zarchen ♦♦  
 Zeilman Family  
 Carl (Biff) Zoepfel♦♦



### Individual

Ryan Family Flower Farm  
 West Street Wines and Spirits ♦  
 Peter and Susan Adamowicz  
 Deborah Allen ♦♦  
 Kathleen M. Alsgaard ♦  
 Blake Anderson  
 Anonymous ♦♦  
 Larry H. and Carolyn Atherton  
 Midge Atwater  
 Dominique Avery ♦♦  
 Charlotte Bidwell Bacon ♦♦  
 David and Maryellen Bailey  
 Suzanne Battos ♦  
 Harald Bender ♦♦  
 Debra Bernard  
 Deb Bishop ♦  
 Teresa B. Bludeau ♦  
 Tracy Bodine ♦  
 Peter Bogen  
 Sharon E. Braden  
 Isabelle Brienza  
 Mary Beth Carey  
 Tom and Dianne Chauvin  
 Noris Christensen  
 Angela Cleveland



Patricia Ann Clifford ♦♦  
 David and Emily Coburn  
 Bill Collins  
 Caroline Collins ♦♦  
 Andrea and David Connaughton  
 Barbara Conroy ♦  
 Lorraine Cosgrove  
 Katharine Creedon  
 Bill Culley  
 Marla Curley  
 Louise Polistena-D'Agosto  
 Charles Dahlberg ♦♦  
 Mark and Melissa Dale  
 Lenore Davis  
 Lori Davison  
 Susan Debevec  
 Gregory and Joyce DeFrancesco  
 Cindi Heslop Dietlin ♦  
 Sandy and Fran DiMario  
 Marge Dixon  
 Felice Donahue ♦♦  
 Rita Dorman  
 Jeffrey and Nancy Dornenburg  
 Kim Drake  
 Linda Drake  
 Celia Duggan  
 Deborah and Gerard Dunn  
 Susan L. Eblen  
 Grace Epstein  
 Jane Erie  
 Babyrel Fitzgerald  
 Sandee Fleet  
 Charity Folk ♦♦  
 Edna M. Forbes  
 Deborah Franco  
 Gayle Gagliardo  
 Chris and Kris Gagnon ♦  
 Norma Gallagher  
 Mary-Jane Gately  
 Ann M. Gilman ♦  
 Regina Ginotti  
 Miriam Glinn ♦♦  
 Jennifer Golec ♦♦  
 Barbara and Bob Griffin ♦  
 Peggy Grohs



Gordan and Janice Gyngell ♦  
 John Harmon  
 Margaret Heagney  
 Marilyn Henry  
 Jerry and Barb Hirsch  
 Brett Hollander  
 Barbara Holmes  
 Mr. and Mrs. Charles Houlihan  
 Diana Hughes ♦  
 Tom Iezzi  
 Elaine Ingraham  
 Kim A. Jennings  
 Linda Johnson  
 Loering M. Johnson ♦  
 W. Wilson Keithline  
 Irmgard Klee ♦♦  
 Lisa Knicos  
 Laurie Krause and Richard Mercer  
 Barbara Kronfeld  
 Karen Labout  
 Sarah Langdon

Bob and Lyn Lauben ♦♦  
 Ron and Gracie Lefevre ♦♦  
 Jennifer Leimbach  
 Dr. Richard Lessow  
 Jacqueline Lewis ♦  
 Ronald and Carol Locandro  
 Sharon Locandro and Ronald Locandro, Jr.  
 Diane Madigan  
 Kathryn and Michael Maggiore  
 Anita Marchant ♦  
 Jim Marks  
 Todd and Lori Martensen ♦  
 George Mason  
 Terence and Jennifer McCaffrey  
 Judith McCarthy  
 Brenda McLaughlin  
 Susan Meyer  
 Kathleen Miller  
 Caryl Muller  
 Alan and Merri Nathan  
 Carlos E. Neumann

OIG  
 Richard and Lorraine O'Donnell ♦♦  
 Joe Orosz  
 Ellen Paine ♦  
 Nestor Palacio ♦  
 Charles Peake ♦  
 James M. Peters, Jr.  
 Helen Peterson  
 David Pettyjohn  
 Diane Phillips ♦♦  
 Emanuel and Margaret Psarakis  
 Penelope Putnam ♦  
 Lori Quarterson  
 Judith Rabinowitz ♦♦  
 Dr. Andrew Radow ♦  
 Lora Rancourt ♦♦  
 Robert Raufeisen  
 Cynthia Reed-Brown  
 Patricia Reese  
 Evelyn and David Reuter ♦  
 Charles Rival



Jo Robertson  
 Peter Rossato  
 Zellene Sandler  
 Ronald and Helen Savino  
 Mary Scanlon ♦  
 Robert Shea  
 Thomas Shea  
 Lalitha Shivaswamy and Rajesh Krishnamurthy  
 Jeff Small  
 Scott O. Smith  
 Jenifer Smolnik  
 Kathryn Smyth  
 Jeffrey Stack  
 Richard Steer ♦  
 Jonas Strimaitis ♦  
 Lynn Swanson  
 Susan and Thomas Sweeney  
 Pat Sylvan  
 The Terwilligers ♦♦  
 Lewis E. Tolan  
 Gerard Toner  
 Thomas S. Turner  
 Susan Van Kleef ♦♦  
 Marjorie VanDeusen  
 Dr. Robert Voroscak ♦♦  
 Philip and Elizabeth Watson ♦  
 David Wells  
 Kevin Wezowicz  
 Douglas Wolske  
 Linda Yates  
 Ray Zeiner

### Memorial Donations

Peter Adams  
 Joseph Barry  
 Phyllis Freeman  
 Dolph Fusco  
 Nancy Humphreys  
 George Richards  
 Barbara Tuller

### Life Members

Ensign-Bickford Realty Corp.  
 Executive Re Indemnity, Inc.  
 McLean Association  
 Richard and Patricia Adams  
 Dr. and Mrs. Burton Aldrich  
 Mr. and Mrs. Thomas Anathan  
 Anonymous ♦♦  
 Mrs. Louis Antonelli  
 Mr. and Mrs. Ramani Ayer  
 Mr. and Mrs. Steve Ballentine  
 Howard Beach  
 Laura Bellmay  
 Mr. and Mrs. Edward Bennett  
 Ilva L. Bergman  
 Joe Bosworth  
 Mr. and Mrs. John Buckey  
 Jon and Patricia Carlson  
 Mr. and Mrs. Cole  
 Mr. and Mrs. William Cox  
 Kathleen Cravero Kristoffersson and Ulf Kristoffersson  
 Mr. and Mrs. Charles Davis  
 Dick and Carol Davis  
 Mr. and Mrs. Timothy E. Ellsworth  
 Claudette Engvall  
 Evan David Eustis  
 Lee Ann Eustis  
 Leslie Pomeroy Eustis  
 Karen Cutler Fine and Alan Fine  
 Stephen Fish  
 Sean and Candace Fitzpatrick  
 Philip Fletcher  
 Sue Fletcher  
 Letty Fonteyne  
 Dr. and Mrs. Malcolm Galen  
 Camille Garrity  
 Michael Girard  
 Lynzy Glover  
 John and Christine Greene  
 Jane Pomeroy Hendrick  
 Mrs. William Hinds

William B. Howard  
 Ms. Gerti James  
 Mr. and Mrs. Stanley Johnson  
 Pamela and David Katz  
 Frank Krasnoger  
 Neal and Laura Landerman  
 Mark and Debbie Leach  
 Thomas and Melissa Lechak  
 Deborah Leonard  
 Dr. Richard Lessow ♦  
 Meleda and John Lowry  
 Bill and Nancy Macke  
 Mr. and Mrs. Robert McGill  
 Mary McGrath  
 Anita and Wolfried Mielert  
 Charles Miller  
 Noel and Mary Ann Moran  
 Laird Mortimer  
 Steve and Cris Noble  
 Jo Nol ♦♦  
 John and Marianne O'Neil  
 Dr. and Mrs. Edmund Olson ♦  
 Peter Olson  
 Ramon and Claire Padron, Jr. ♦♦  
 David and Beverly Payne  
 Gail Pease  
 Mr. and Mrs. Terrance Piotrowicz  
 Bruce and Diane Powell  
 Mr. and Mrs. Richard Prager  
 Ruth Ann Preston ♦♦  
 Deborah Reynolds  
 Sally and Don Rieger ♦♦♦  
 Mrs. Gloria Rose  
 Timothy and Sheryl Ruark  
 Dr. Bernice Schaefer  
 Mr. and Mrs. Scott Shanks  
 Thomas and Clair Sharpless  
 Joan Simonds  
 Jonathan Simonds  
 Moira Simonds  
 Mr. and Mrs. David Sirman

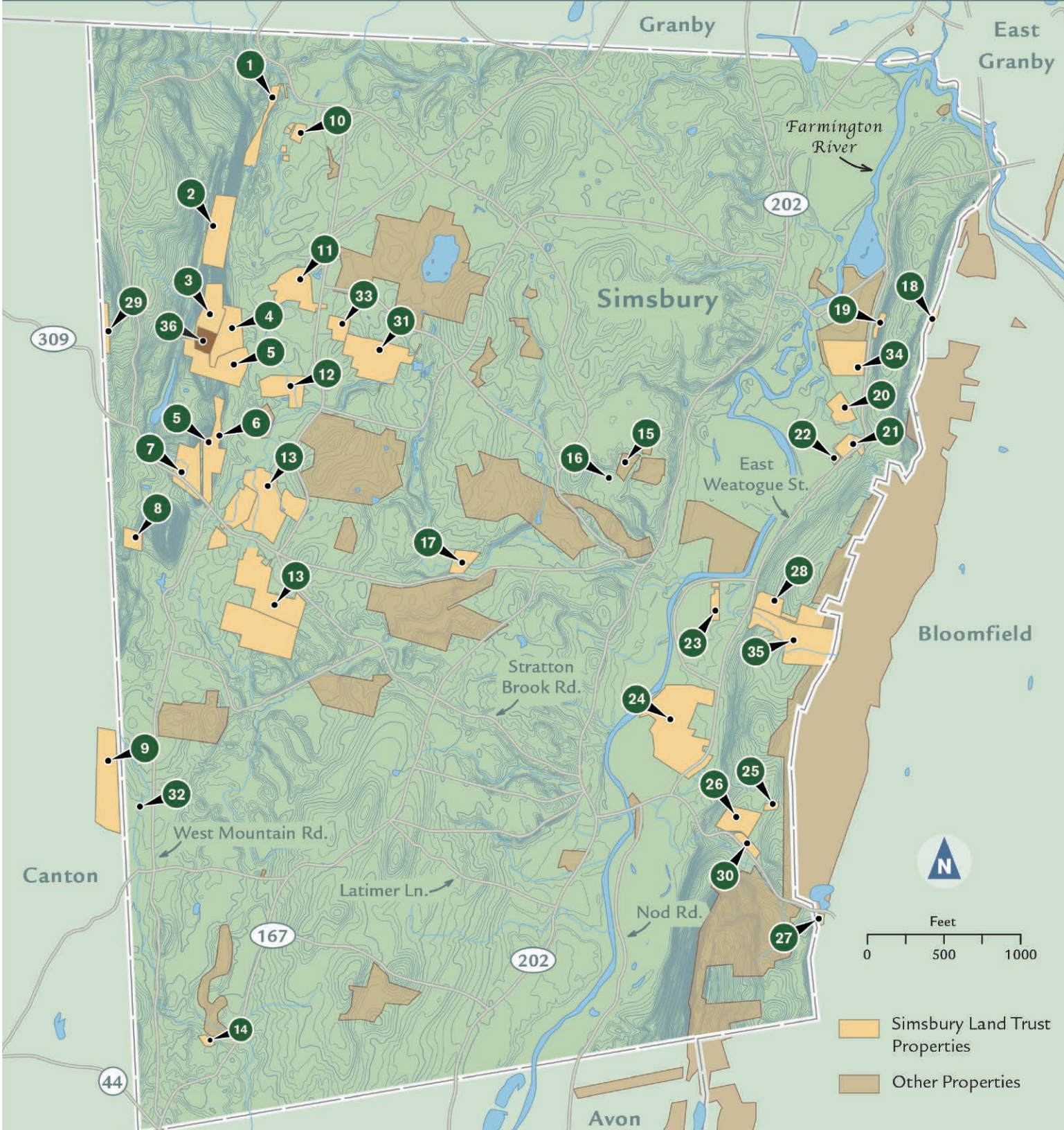


Mrs. J. Paul Stoeke  
 Paula Stoeke  
 Camille M.G. Sullivan  
 Theodore Tansi  
 George Trumbull  
 Marilyn Tyszk  
 Mr. Ted Vogt  
 Lainie Wade  
 John Wadhams  
 Richard and Carole Wagner  
 Daphne Walker  
 Patricia Wegner  
 Richard and Barbara Whitehead  
 Mary Wiseman  
 Frederick Worcester

### In-Kind Donors

ERSI  
 John Johnson Art Direction and Design





## Simsbury Land Trust Properties

1. Cannon
2. Cathles
3. Friedman
4. Hendrick
5. The Master's School
6. Fonteyne
7. 60 Westledge
8. Walker
9. Arnold
10. Leaska
11. Bog
12. Knapp
13. Tulmeadow Farm
14. Rose/Krasnoger
15. Carlson
16. Bergman
17. Welden
18. James
19. Ketchin Quarry
20. Wegner
21. Case
22. Landerman
23. Salster
24. Rosedale Farms
25. Fletcher
26. Holcomb
27. Cutler
28. Owen-Mortimer
29. Landerman #2
30. Glover
31. Wagner Woods
32. Macke
33. George Hall Farm
34. George Hall/Pharos Farm
35. Tanager Hill
36. Michael Donlin





P.O. Box 634  
Simsbury, CT 06070  
860-651-8773  
[www.simsburylandtrust.org](http://www.simsburylandtrust.org)

Non-Profit  
Organization  
U.S. Postage  
PAID  
Hartford, CT  
Permit No. 158

## Time to Renew Your Membership!

This was a great year for the SLT – record use of our properties and near record membership numbers. For that, we thank all of you!

But we still need your support! Membership contributions provide funding for our operating budget, including trail work and maintenance, invasive removal, tree work, erosion control and drainage improvements, signage, office and staff, publications, the website and more.

In return for your donation you get the satisfaction that comes with improving the environment and recreation opportunities in town, the pride from helping support and care for over 1,100 acres of beautiful open space, and the enjoyment from being part of a group that cares about open space preservation and education in Simsbury.

Memberships with the Simsbury Land Trust are based on the calendar year – we start renewing for 2021 in the fall of 2020. Your membership renewed now is good for all of 2021.

Annual membership donations range from \$40 to \$1,000 and more. Your support is important to us, please consider renewing with the enclosed envelope or on our website today!

*Thank you!*

